

## ADDITIONAL SUPPORT

Our aim is to build on your strengths and skills and to assist you in finding creative, personalised solutions to support you in your treatment and recovery journey.

### Satellite services

Access to satellite substance misuse clinics in Crininal Justice Settings (Offenders Hub, Probation and CGL) and Homelessness Hostels in Lambeth.

Call 0203 228 1500 if you have any queries.

### Detox

Community detoxification from both drugs and alcohol are offered, including in-patient detoxification if appropriate.

### Abstinence

For those seeking abstinence, assessments for abstinence based treatment programmes are available.

### Peer Support

**Aurora Project Lambeth** offers a peer mentoring service to individuals in treatment for alcohol or drug use within the borough. Peer mentoring enables individuals to have the chance to get one to one support from volunteers who have been through treatment themselves and are now in recovery. To be referred to Aurora Project Lambeth please speak to your key worker who can arrange this for you.

**Telephone:** 0207 733 8221

**Email:** support@auroraprojectlambeth.org.uk

**Facebook:** www.facebook.com/auroraprojectlambeth

**Twitter:** @AuroraProject1

### Families and Friends Service

If you, partner or family member are affected by someone else's drinking or substance misuse, we can offer support via the Family and Friends Service. Please speak to your keyworker about this.

## USEFUL NUMBERS

### Alcohol Anonymous

Helpline: 0845 769 7555

### Cocaine Anonymous

Helpline: 0800 612 0225

### Narcotics Anonymous

Helpline: 0300 999 1212

### Lambeth Service Users Council

0207 737 0099

### Release (Legal Info)

0845 450 0215

## USEFUL WEBSITES

### Blenheim CDP

- www.blenheimcdp.org.uk
- twitter.com/BlenheimCDP
- www.facebook.com/pages/Friends-of-Blenheim

### Lorraine Hewitt House

#### Service User Group

www.facebook.com/pages/Lorraine-Hewitt-House-Service-User-Group

### Lambeth Service User Council

www.facebook.com/LambethServiceUserCouncil

### Lambeth Drug and Alcohol Consortium

www.blenheimcdp.org.uk/services/lorraine-hewitt-house/

### Aurora Project Lambeth Substance Misuse Peer Support

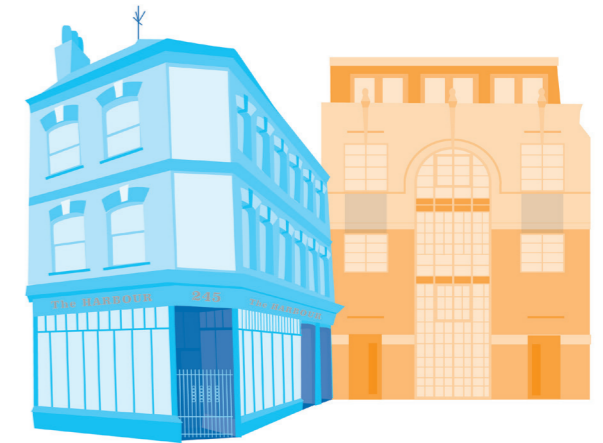
www.auroraprojectlambeth.org.uk

### South London and Maudsley NHS Foundation Trust

www.slam.nhs.uk

Leave problematic drug and alcohol use behind with help from

# LAMBETH DRUG AND ALCOHOL TREATMENT CONSORTIUM



The Harbour

Lorraine Hewitt House

Come along and discuss options for treatment and ongoing support

**FREE confidential service**  
to all Lambeth residents aged 18 years and over

[www.lambeth-drug-alcohol.co.uk](http://www.lambeth-drug-alcohol.co.uk)

### GP Shared Care

The GP Shared Care service is available in over 30 GP practices across Lambeth.

The service includes:

- Assessment of need
- Advice and information on substance use
- Detoxification and prescribing to support recovery
- One to One support

### How to access:

Please speak to your GP for a referral or call 0203 228 1510 or 0203 228 1500 for more information.



### Available at The Harbour:

- Café style drop in
- Access to computers – wifi access
- A full group programme e.g. Relapse Prevention, SMART Recovery, Women's Group
- Complementary therapies
- One to One support
- Benefits Advice
- Tenancy Support
- Advice and information on training courses/volunteering/leisure activities/employment support
- Links to local community services
- Yoga/mindfulness
- Support to access psychological therapies
- Cannabis group

### Opening Times

Mon 9.30am – 4.30pm  
Tues 9.30am – 1.00pm  
Wed 9.30am – 4.30pm  
Thurs 9.30am – 4.30pm  
Fri 9.30am – 4.30pm

- No appointment required
- Wheelchair access to ground floor



### THE HARBOUR

Community Link Team, 245 Coldharbour Lane, Brixton, SW9 8RR  
Tel: 0207 095 1980

### Available at Lorraine Hewitt House

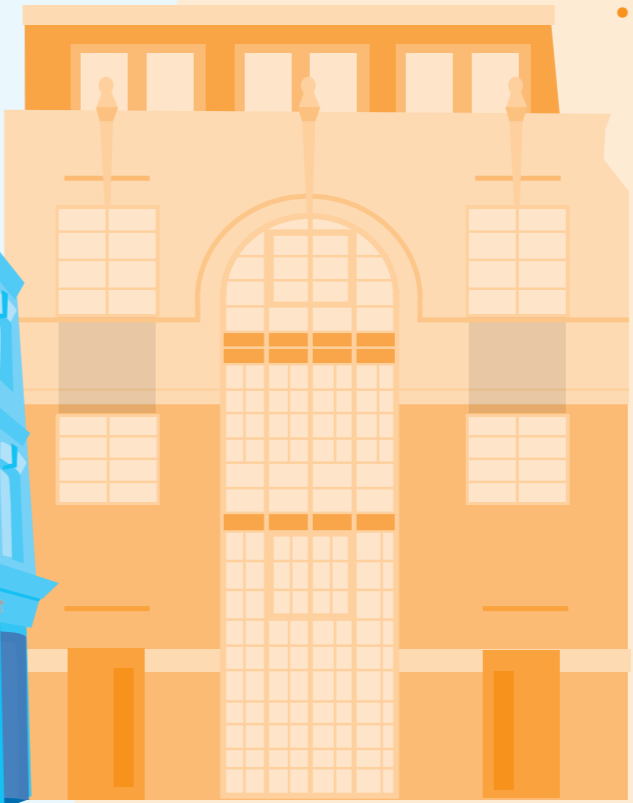
- Advice and information on substance use
- Service for chem users
- Sexual health clinic
- Detoxification and prescribing to support recovery
- Assessment for funded abstinence based treatment
- Community alcohol treatment
- Psychology and counselling services
- HIV and hepatitis testing
- Specialist hepatitis C treatment
- Needle exchange
  - Relapse prevention
  - Specialist work with children and families
  - Support for families and carers
  - Legal/housing and benefits advice
  - Art group
  - Tobacco dependency clinic

### Opening Times

Mon 9.00am – 4.45pm  
Tues 9.00am – 1.45pm  
Wed 9.00am – 4.45pm  
Thurs 9.00am – 4.45pm  
Fri 9.00am – 4.45pm  
Evening appointments offered

### Walk in Assessment

Every morning  
Mon – Fri 9am – 11am



### LORRAINE HEWITT HOUSE

12/14 Brighton Terrace, Brixton, SW9 8DG  
Tel: 0203 228 1500